

XPS 13

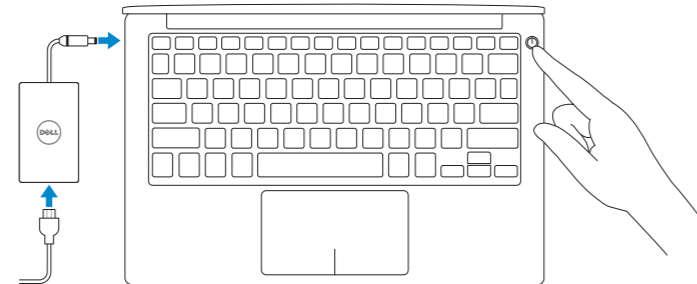
Quick Start Guide

快速入門指南
Panduan Pengaktifan Cepat



1 Connect the power adapter and press the power button

連接電源轉接器然後按下電源按鈕
Sambungkan adaptor daya dan tekan tombol daya



2 Finish Windows setup

完成 Windows 設定 | Tuntaskan penataan Windows

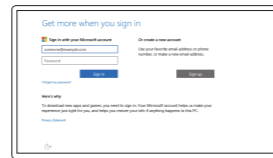


Enable Dell updates
啟用 Dell 更新
Aktifkan pembaruan Dell



Connect to your network
連接網路
Sambungkan ke jaringan Anda

- NOTE: If you are connecting to a secured wireless network, enter the password for the wireless network access when prompted.
- 註：如果您要連線至安全的無線網路，請在提示下輸入存取無線網路的密碼。
- CATATAN: Jika Anda menghubungkan ke jaringan nirkabel aman, masukkan kata sandi untuk akses jaringan nirkabel tersebut saat diminta.



Sign in to your Microsoft account or create a local account
登入您的 Microsoft 帳號或建立本機帳號
Masuk ke akun Microsoft Anda atau buat akun lokal

Create recovery media

建立復原媒體 | Buat media pemulihan

In Windows search, type **Recovery**, click **Create a recovery media**, and follow the instructions on the screen.
在 Windows 搜尋中，輸入 **Recovery**，按一下建立復原媒體，然後依照畫面上的指示進行。
Di dalam pencarian Windows, ketikkan **Recovery**, klik **Buat media pemulihan**, dan ikuti petunjuk di layar.

Locate Dell apps

找到 Dell 應用程式 | Mencari aplikasi Dell



Register your computer
註冊您的電腦 | Daftarkan komputer Anda



Dell Help & Support
Dell 說明及支援 | Bantuan & Dukungan Dell



SupportAssist Check and update your computer
檢查並更新您的電腦
Periksa dan perbarui komputer Anda

Product support and manuals
產品支援與手冊
Manual dan dukungan produk

Dell.com/support
Dell.com/support/manuals
Dell.com/support/windows

Contact Dell
與 Dell 公司聯絡 | Hubungi Dell

Dell.com/contactdell

Regulatory and safety
管制與安全 | Regulasi dan keselamatan

Dell.com/regulatory_compliance

Regulatory model
安規型號 | Model regulatori

P54G

Regulatory type
安規類型 | Jenis regulatori

P54G001

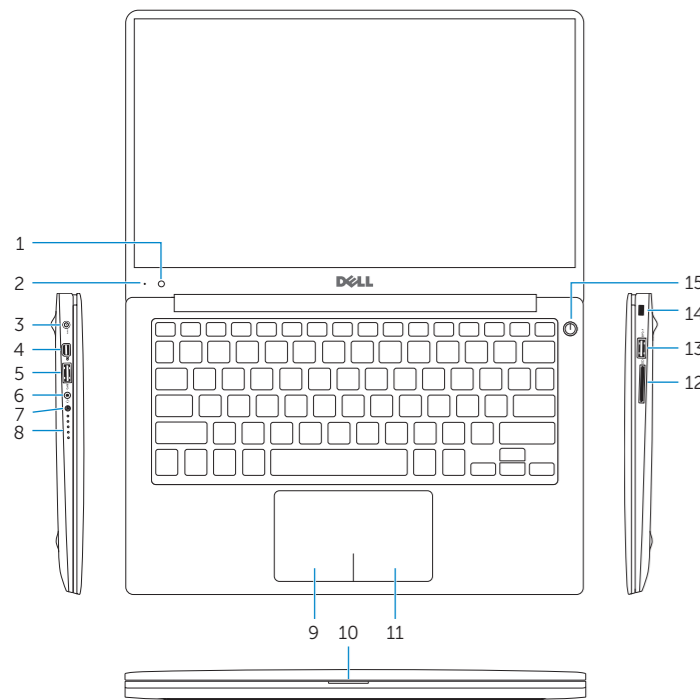
Computer model
電腦型號 | Model komputer

XPS 9343

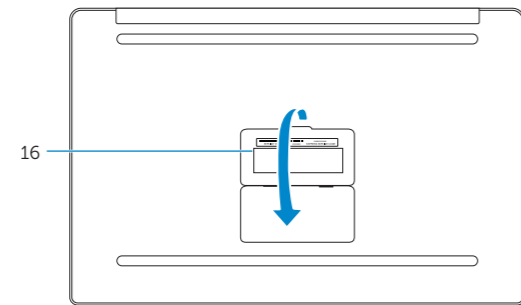


Features

功能 | Fitur



- | | |
|-------------------------------------|---------------------------------------|
| 1. Camera | 9. Left-click area |
| 2. Camera-status light | 10. Battery-status light |
| 3. Power-adaptor port | 11. Right-click area |
| 4. Mini DisplayPort | 12. Media-card reader |
| 5. USB 3.0 port | 13. USB 3.0 port with PowerShare |
| 6. Headset port | 14. Security-cable slot |
| 7. Battery-charge status button | 15. Power button |
| 8. Battery-charge status lights (5) | 16. Regulatory and Service Tag labels |



- | | |
|---------------------|--------------------------------|
| 1. 攝影機 | 9. 左鍵區 |
| 2. 攝影機狀態指示燈 | 10. 電池狀態指示燈 |
| 3. 電源變壓器連接埠 | 11. 右鍵區 |
| 4. Mini DisplayPort | 12. 媒體讀卡器 |
| 5. USB 3.0 連接埠 | 13. 具 PowerShare 的 USB 3.0 連接埠 |
| 6. 耳麥連接埠 | 14. 安全纜線孔 |
| 7. 電池電量狀態按鈕 | 15. 電源按鈕 |
| 8. 電池電量狀態指示燈 (5) | 16. 法規和服務標籤 |

- | | |
|--------------------------------------|-------------------------------------|
| 1. Kamera | 9. Area klik kiri |
| 2. Lampu status kamera | 10. Lampu status baterai |
| 3. Port adaptor daya | 11. Area klik kanan |
| 4. Mini-DisplayPort | 12. Pembaca kartu media |
| 5. Port USB 3.0 | 13. Port USB 3.0 dengan PowerShare |
| 6. Port headset | 14. Slot kabel pengaman |
| 7. Tombol status muatan baterai | 15. Tombol daya |
| 8. Lampu status isi daya baterai (5) | 16. Label Tag Servis dan Regulatori |

Shortcut keys

捷徑鍵 | Tombol pintasan

- | | |
|------------|---|
| F1 | Mute audio
靜音 Mendingkatkan audio |
| F2 | Decrease volume
降低音量 Menurunkan volume |
| F3 | Increase volume
提高音量 Meningkatkan volume |
| F4 | Play previous track/chapter
播放上一首曲目/上一個章節 Memutar trek/bab sebelumnya |
| F5 | Play/Pause
播放/暫停 Memutar/Menjeda |
| F6 | Play next track/chapter
播放下一首曲目/下一個章節 Memutar trek/bab selanjutnya |
| F8 | Switch to external display
切換至外部顯示器 Mengalihkan ke display eksternal |
| F9 | Search
搜尋 Menelusuri |
| F10 | Toggle keyboard backlight
切換鍵盤背光
Mengalihkan lampu latar keyboard |

F11 **Decrease brightness**
降低亮度 | Menurunkan kecerahan

F12 **Increase brightness**
增加亮度 | Meningkatkan kecerahan

Fn + **Esc** **Toggle Fn-key lock**
切換 Fn 鍵鎖定 | Mengalihkan kunci tombol Fn

Fn + **PrtScr** **Turn off/on wireless**
啟動/關閉無線功能 | Mengaktifkan/menonaktifkan nirkabel

NOTE: For more information, see *Specifications* at dell.com/support.

註: 如需更多資訊，請參閱 dell.com/support 中的規格。

CATATAN: Untuk informasi selengkapnya, lihat *Spesifikasi* di dell.com/support.